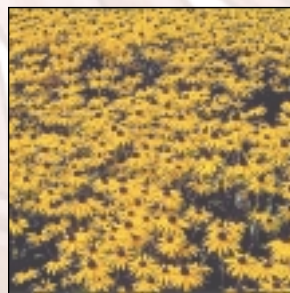
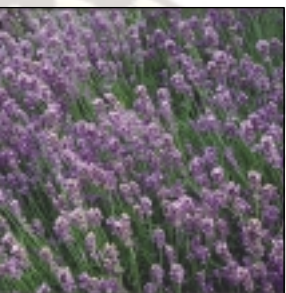


# Sensational blossoms abound

# Summer

## THE POWER OF PERENNIALS



Keep your landscape blooming all season long with some of these "long blooming" perennials:

Achillea (Yarrow)	Hemerocallis 'Happy Returns' (Daylily)
Alcea (Hollyhock)	Kniphofia (Red Hot Poker)
Anemone (Wind Flower)	Lavender
Asclepias tuberosa (Butterfly Weed)	Liatris spicata (Gayfeather)
Campanula (clips series)	Ligularia (Ragwort)
Clematis 'Jackmani'	Lobelia cardinalis (Cardinal Flower)
Coreopsis (Tickseed)	Lythrum (Loosestrife)
Corydalis lutea (Yellow Bleeding Heart)	Malva (Mallow)
Delosperma (Ice Plant)	Monarda (Bee Balm)
Dicentra exima (Bleeding Heart)	Nepeta (Catnip or Catmint)
Doronicum	Oneohtro 'Siskiyou' (Evening Primrose)
Echinacea (Coneflower)	Perovskia (Russian Sage)
Gallardia (Blanket Flower)	Rudbeckia (Coneflower)
Gaura (Wand Flower)	Salvia (most verticillata)
Geranium 'Johnson Blue'	Scabiosa (Pincushion Flower)
Helenium (Helen's Flower)	Shasta Daisy 'Becky' or 'Snow Queen'
Heliopsis (Sunflower)	Stokesia (Stoke's Aster)
Hemerocallis 'Stella D'Oro' (Daylily)	Veronica (Speedwell)

### TIPS TO INCREASE THE LIFESPAN OF CUT PERENNIALS

1. Cut flowers in the morning or evening.
2. Use a sharp knife or pair of scissors and plunge stems into water immediately.
3. When arranging the flowers, remove any leaves that would be underwater. Re-cut stems before putting in a vase.
4. Place arrangements in a cool room out of direct sunlight and change water daily.
5. Add FLORALIFE floral preservative.

## YOUR NURSERY NAME/LOGO

### SUMMER GARDEN checklist

- Begin summer rose care program of deadheading, spraying and watering.
- Fertilize roses with ESPOMA ROSE-TONE, azaleas with ESPOMA HOLLY-TONE, and fruit trees with ROSS FRUIT TREE SPIKES or 5-10-5 Fertilizer.
- Deadhead bulbs, but leave foliage to mature and yellow before removing. This will help nourish the bulb for next year's flowering.
- Prune new growth on needed evergreens.
- Dig and divide early blooming perennials after flowering.
- Spray azaleas, pieris japonica, laurel or rhododendron with BONIDE ALL-SEASON OIL to control lacebug. Spray in the early morning or evening when temperatures are moderate and their is no rain in the forecast.
- Attract hummingbirds and butterflies to your landscape by planting Butterfly Bush, Bee Balm (Monarda), Hardy Hibiscus, Lobelia, Scabiosa and Coreopsis. ⇨



## DESIGN A LANDSCAPE THAT WORKS

Raised beds have been around for years, but have become increasingly popular in the past few years because they make the landscape orderly, organized and easy to maintain. You can readily reach over and pull weeds as they appear, plant more comfortably and enjoy the new depth and dimension of your lawn and garden. Raised beds are also particularly helpful if you are working with heavy soils that drain poorly.

1. Define the bed lines with a rope or hose.
2. Dig a 4-6" deep edge along the perimeter.
3. Remove existing sod/grass from the bed.

4. Place BELGIAN BLOCK, WALL STONE OR EDGING along this new bed line
5. Build up your flower bed approximately 6-8" with a combination of TOP SOIL, COW MANURE AND PEAT MOSS.
6. Compact your soil mixture as your build up each layer.
7. Increase the visual impact of your flower bed by planting at different levels with lower growing plants followed by medium then tall plants in the back.
8. Apply a 2-3" layer of mulch or stone and thoroughly soak your new landscape feature. Sprinkle Miracle Gro Weed Preventer over the area to provide an invisible layer of protection against germinating weeds. ⇨



bring gardening to a higher level



# quench

## WISE WATERING

### What to Use...

- Soaker hoses** allow deep watering without runoff – perfect for new planting areas or established flower and shrub beds.
- Watering wands** are used for small containers, hanging baskets and planting beds. They give a gentle spray without splashing the soil.
- Rain gauges** for checking the amount of rainfall or for sprinkler placement.
- Sprinklers**, primarily for lawns, can also be used in larger planting areas.
- Mulches** help conserve moisture evaporation and reduce surface runoff.
- Automatic water timers** allow you to water daily without any hassle. They are set by gallons delivered or an amount of time.

### When to Water...

- Morning** is the best time to water.
- Containers** and **hanging baskets** should be checked every day.
- Newly planted trees** and **shrubs** need 1" of water a week. Generally, water every third day without rain for the first month, then once a week.
- Flowers** and **vegetables** need to be watered about three times a week if there is no rain.
- Newly seeded** or **sodded lawns** must be watered daily during the summer until established, then frequently through the first growing season.

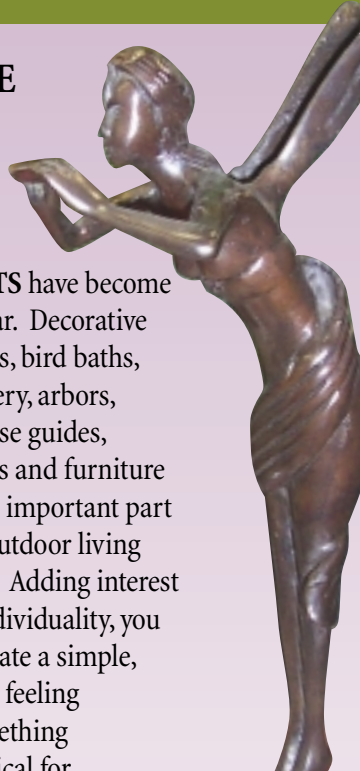
### Where to Water...

**Apply water to the root zone**, thoroughly soaking the soil. Try not to water the leaves or foliage. Soak to a depth of 12" for trees and shrubs.

### How to Water...

The key is infrequent, heavy watering rather than light, frequent waterings. This encourages deep root growth and increases drought tolerance. ☺

# ACCESSORIZE YOUR GARDEN ambiance



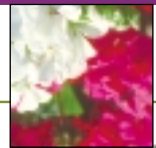
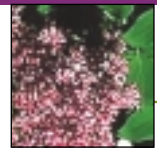
**GARDEN ACCENTS** have become increasingly popular. Decorative statuary, birdhouses, bird baths, gazing globes, pottery, arbors, outdoor faucets, hose guides, sculpture sprinklers and furniture

play an important part in an outdoor living retreat. Adding interest and individuality, you can create a simple, elegant feeling or something whimsical for just plain fun! ☺



## Herb Butters

*Herb butters can be kept frozen, ready to be sliced and used on grilled meat, in stuffing, or on pasta or bread. All kinds of fresh herbs can be used. The amount of herb to use varies, but as a rough guide, 4 to 5 tbsp of a finely chopped herb should be added to 8 oz of butter (blend or use a food processor). Chill in the refrigerator, then wrap and freeze. CHERVIL, BASIL, CORIANDER, and ROSEMARY make delicious herb butters as well as a mixture of PARSLEY with chopped GARLIC. Be sure to use salted butter. ☺*



# Sensational Summer



**YOUR NURSERY**  
**NAME/LOGO**  
123 Street Road  
Anytown, ST 12345  
123.555.1212

PRSRT STD  
U.S. Postage  
PAID  
Yorlown, ST  
Permit # ??